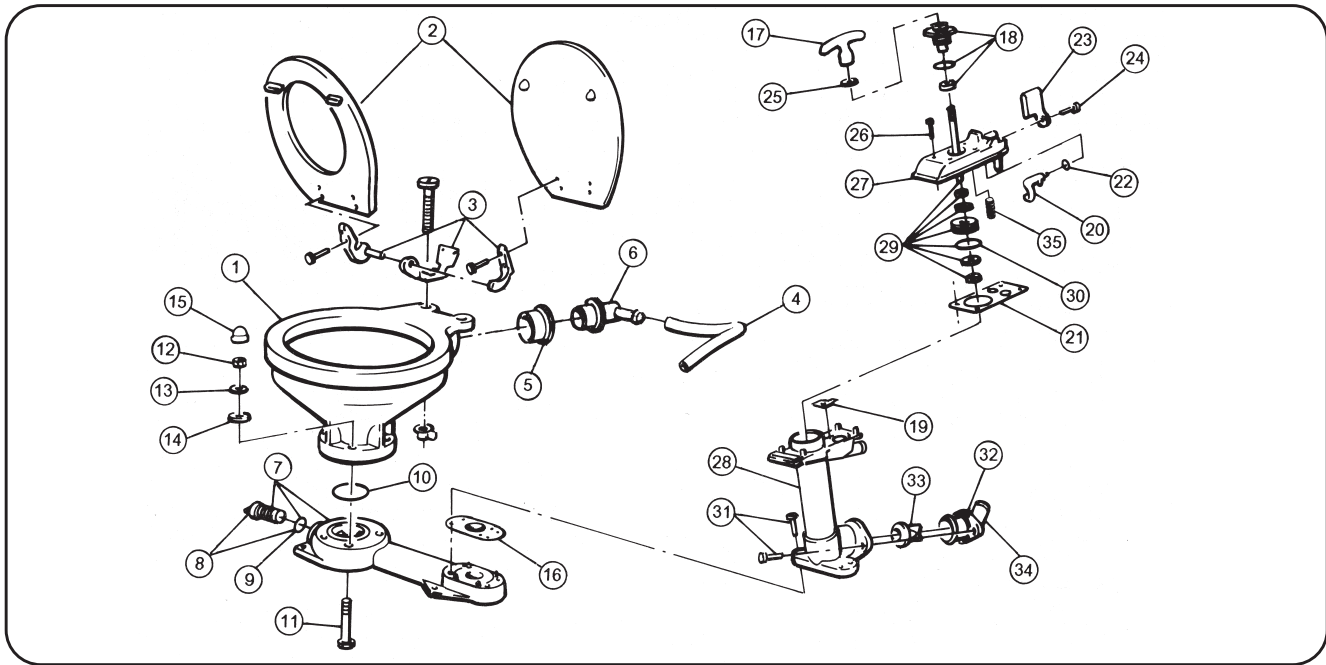


# 29090-2 & 29120-2 Series Jabsco Manual Toilets (1998-2007)



| Repair Kits Available |            |                           |
|-----------------------|------------|---------------------------|
| Kit                   | Part No    | Description               |
| A                     | 29045-2000 | MAJOR SERVICE KIT         |
| B                     | 29040-3000 | PUMP ASSEMBLY             |
| C                     | 29094-3000 | VALVE COVER ASSEMBLY      |
| D                     | 29051-2000 | PUMP CYLINDER ASSEMBLY    |
| E                     | 29047-0000 | BASE TO BOWL MOUNTING KIT |



| Key | Description   | Qty Per Toilet | Part No    | Qty per Repair Kit |   |   |   |   |
|-----|---|----------------|------------|--------------------|---|---|---|---|
|     |   |                |            | A                  | B | C | D | E |
| 1   | BOWL COMPACT TOILET   | 1              | 29096-0000 |                    |   |   |   |   |
|     | BOWL REGULAR TOILET   | 1              | 29126-0000 |                    |   |   |   |   |
| 2   | SEAT, LID & HINGE SET COMPACT TOILET                          | 1              | 29097-1000 |                    |   |   |   |   |
|     | REGULAR TOILET  |                | 29127-1000 |                    |   |   |   |   |
| 3   | HINGE SET (1 PAIR) COMPACT TOILET                             | 1              | 29098-1000 |                    |   |   |   |   |
|     | REGULAR TOILET  |                | 29098-2000 |                    |   |   |   |   |
| 4   | HOSE COMPACT TOILET   | 1              | 29035-1000 |                    |   |   |   |   |
|     | HOSE REGULAR TOILET   | 1              | 29035-1001 |                    |   |   |   |   |
| 5   | INTAKE SEAL + INTAKE ELBOW                                    | 1              | 29048-0000 |                    |   |   |   |   |
| 6   | BASE, PLUG + O-RING ASSY                                      | 1              | 29041-1000 |                    |   |   |   |   |
| 8   | PLUG + O-RING ASSY (UP TO 2002 - SCREW) (FROM 2003 - BAYONET) | 1              | 29028-0000 |                    |   |   |   |   |
|     |   |                | 29028-2000 |                    |   |   |   |   |
| 9   | O-RING (PLUG)   | 1              |            |                    |   |   |   |   |
| 10  | O-RING (BOWL)   | 1              |            |                    |   |   | 1 |   |
| 11  | BOLT  | 4              |            |                    |   |   | 4 |   |
| 12  | NUT   | 4              |            |                    |   |   | 4 |   |
| 13  | WASHER (S.S)  | 4              |            |                    |   |   | 4 |   |
| 14  | WASHER (NYLON)  | 4              |            |                    |   |   | 4 |   |
| 15  | CAP   | 4              |            |                    |   |   | 4 |   |
| 16  | BASE VALVE GASKET   | 1              | 29043-0000 | 1                  | 1 |   | 1 |   |
| 17  | HANDLE  | 1              |            |                    | 1 | 1 |   |   |
| 18  | SEAL ASSEMBLY   | 1              | 29044-2000 | 1                  | 1 | 1 |   |   |
| 19  | TOP VALVE SEAT  | 1              |            | 1                  | 1 | 1 | 1 |   |
| 20  | CAM   | 1              |            |                    | 1 | 1 |   |   |
| 21  | TOP VALVE GASKET  | 1              | 29042-0000 | 1                  | 1 |   |   |   |
| 22  | O-RING (FLUSH LEVER)  | 1              |            | 1                  | 1 | 1 |   |   |
| 23  | FLUSH CONTROL LEVER   | 1              |            |                    | 1 | 1 |   |   |
| 24  | SCREW (FLUSH LEVER)   | 1              |            | 1                  | 1 | 1 |   |   |
| 25  | BUFFER  | 1              |            | 1                  | 1 |   |   |   |
| 26  | SCREW (VALVE COVER)   | 6              |            | 1                  | 6 | 6 | 1 |   |
| 27  | VALVE COVER   | 1              |            |                    | 1 | 1 |   |   |
| 28  | PUMP CYLINDER   | 1              |            |                    | 1 | 1 |   |   |
| 29  | PISTON, ROD & O-RING ASSY                                     | 1              | 29046-3000 |                    | 1 |   |   |   |
| 30  | O-RING (PISTON)   | 1              |            | 1                  | 1 |   |   |   |
| 31  | SCREW (PUMP CYLINDER)   | 6              |            | 1                  | 3 | 3 |   |   |
| 32  | DISCHARGE FLANGE  | 1              | 29091-1000 |                    | 1 | 1 |   |   |
| 33  | JOKER VALVE   | 1              | 29092-1000 | 1                  | 1 | 1 |   |   |
| 34  | DISCHARGE ELBOW   | 1              | 29029-1000 |                    | 1 | 1 |   |   |
| 35  | VALVE SPRING  | 1              |            | 1                  | 1 | 1 | 1 |   |